

PROJECT FACT SHEET



Pilot Study of Noise Impact Mumbai Chattrapathi Shivaji International Airport

In 2013, Anotec, through its Indian partner **Non-Dimensional GIS**, was contracted by Mumbai International airport to conduct a pilot study to assess the actual noise impact of the airport. This was the first such study performed in India, in accordance with the then new Airport Regulations. The study consisted in noise and track measurements at 4 locations around the airport, during several months. These measurements were then used to validate the noise maps that were predicted as part of the study. A comprehensive land use survey was performed to establish population and sensitive areas in the communities around the airport. With this, the actual noise impact of the airport operations could be established and potential mitigation actions could be identified.



Mumbai International Airport Ltd



Noise Maps and Population Affected



January – May 2013



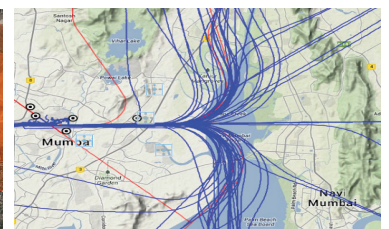
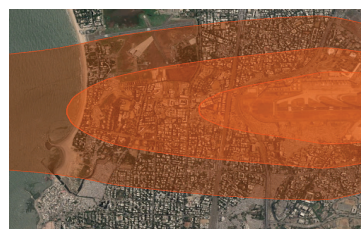
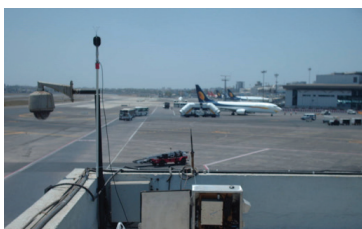
Indian Aviation Environment Circular 3, 2013



4 IBANET Stations



First Study Under New Noise Legislation



+ 34 958.620.631



info@anotecengineering.com



Rector Jose Vida Soria, 2 portal 7 - 2°C
18613 • Motril • Spain

www.anotecengineering.com